



NZDF



Civilian
anewzealandspirit

Fact Sheet

THE NEW ZEALAND DEFENCE FORCE (NZDF), IS A FULLY INTEGRATED MILITARY AND CIVILIAN ORGANISATION EMPLOYING AROUND 9,000 PEOPLE IN THE REGULAR FORCE, 2,500 IN THE TERRITORIAL FORCE, AND APPROXIMATELY 2,000 CIVILIANS ACROSS THE ARMED SERVICES OF NAVY, ARMY AND AIR FORCE, OPERATING AS THREE SERVICES – ONE FORCE.

Civilians are an important part of the Defence Force team, and play a key role in meeting the NZDF's primary mission, supporting Defence activities at all levels, often bringing specialist expertise and performing a wide range of functions to enhance overall defence capabilities.

The NZDF comprises Headquarters, the three Services (Army, Navy and Air Force), and Joint Command. Each part has specific roles and resources to help meet the NZDF mission. The Chief of Defence Force (CDF), the three single Service Chiefs, and the Joint Force Commander, lead the Defence team.

HEAD QUARTERS NEW ZEALAND DEFENCE FORCE

HQ is the command, policy and administrative centre in Wellington, providing overall direction and management of the whole of NZDF.

NEW ZEALAND ARMY

The New Zealand Army provides a land combat force consisting of infantry, light armoured vehicles, and reconnaissance, artillery, engineering, signals and logistic units.

ROYAL NEW ZEALAND NAVY

The Royal New Zealand Navy is responsible for the maritime defence of New Zealand and its interests, and operates ocean-going frigates, Seasprite helicopters and a replenishment ship. It also has a hydrographic and oceanographic research ship, a diving team, and has the capability to patrol in inshore and offshore waters.

ROYAL NEW ZEALAND AIR FORCE

The Royal New Zealand Air Force provides maritime surveillance and reconnaissance using the Orion, Hercules and Boeing aircraft to provide long range and tactical air transport and Iroquois helicopters which support ground forces and civil authorities.

HEADQUARTERS JOINT FORCES NEW ZEALAND

Joint Forces New Zealand coordinates all joint military operations in New Zealand and overseas, enabling closer co-operation across the three Services in planning and executing operations.

VANZ

Veterans Affairs New Zealand (VANZ) is a semi-autonomous body within the NZDF. It is responsible for providing policy advice on, and administration of, a wide range of issues relating to veterans' entitlements, care and recognition, coordinating commemorative activities, managing government's relationship with veterans and their representative organisations, and providing ex-service memorials and maintenance of Services Cemeteries throughout New Zealand.

VISION FOR NZDF: THREE SERVICES – ONE FORCE

The New Zealand Defence Force team is an equal partnership between three separate and distinct Services, Headquarters, Joint Forces, and Headquarters NZDF.

The focus is on building a Defence Force that is united, professionally trained, competent, appropriately equipped and capable of serving the interests of New Zealand, confronting the security challenges of the future, and meeting the requirements of the New Zealand Government.

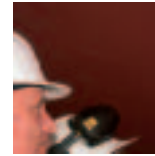
The NZDF's mission is to secure New Zealand against external threat, to protect our sovereign interests including our Exclusive Economic Zone (EEZ) and to be ready to meet threats in our strategic area of interest.

NZDF's operational outcomes are to achieve:

- A secure New Zealand and its environs;
- A strong relationship with Australia
- A secure, stable environment in the South Pacific
- A secure and stable Asia-Pacific region; and
- A stable, peaceful international community.

VALUES

Values are the link, essentially the 'glue' that binds a group of people together and forms the basis of an overall culture. Values are central to NZDF and through them NZDF will achieve its vision:



LOYALTY

Uniformed personnel swear an oath of allegiance. This means total and unconditional loyalty to the New Zealand Government and the Crown. Civilian personnel, while not bound by this oath, are expected to share this loyalty. This is a key component of the organisation.



INTEGRITY

Military service requires total trust among personnel. All individuals must be transparent in their dealings with each other and consistent in the performance of their duties.

PROFESSIONALISM

Personnel serving and working within the NZDF should carry out their tasks to the best of their ability and to actively strive for continual improvement in building a professional organisation. NZDF's goal is to create an environment for excellence.

COMMITMENT

Commitment requires personnel to work together as one team in serving the interest of all New Zealanders.

This requires individuals putting others before self when necessary.

Information on the NZDF is available through our website: www.nzdf.mil.nz.

